

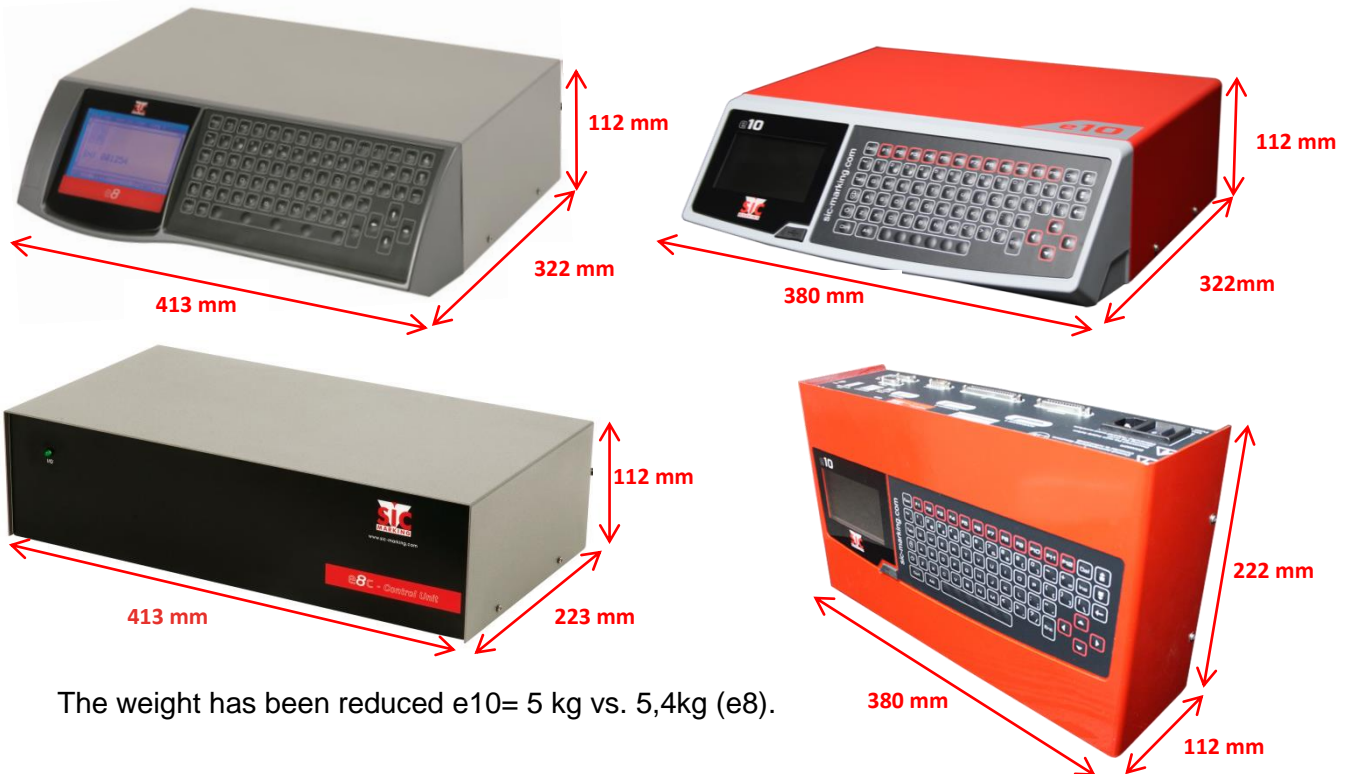


e10 and e10 R controllers

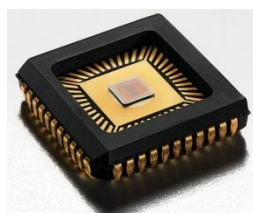
What's new with the e10?

Several improvements, compared with the e8 controller, have been set up. Performance and versatility have been reinforced.

1 Reduced dimensions (approx. minus 10% for e10 vs. e8)



The weight has been reduced e10= 5 kg vs. 5,4kg (e8).



2 Quick start and smooth browsing thanks to a cutting-edge microprocessor

Time to start e8 =13s, e10=4s

Memory capacity 7010 Ko (only 512 Ko for e8)

3 Color screen (95mm x 54mm).



e8 = 240x128 pixels



e10 = 480x272 pixels

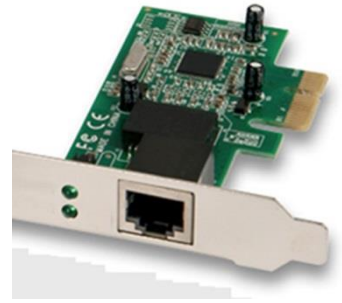


4 USB port on the front panel: easy marking files transfer with a USB key. New SIC TOOL e10 software.

5 The e10 R version has the same features than the e10, but can be easily integrated thanks to a kit for mounting on DIN rails, and the reduced size. 2 possible configurations: upward connectors or downward connectors.



- 6 Option: 3rd and 4th axis card, for controlling until 2 additional axis.



- 7 Option: **Booster** card for deep marking.

- 8 As a standard, ports available: **RS232, RS422, et USB**
As an option: **RS485, Profibus.**
As an option: **TCP/IP, Ethernet, additional USB.**

